

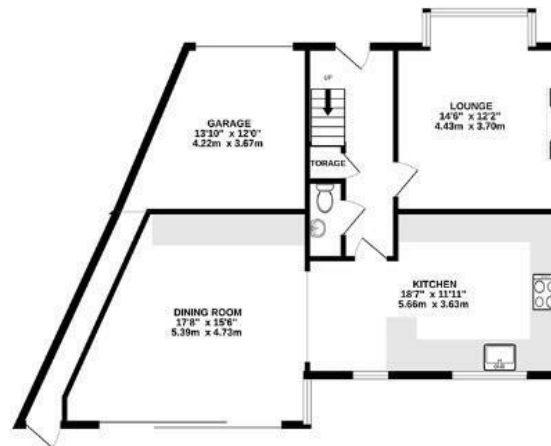
Perrycroft Avenue

BISHOPSWORTH

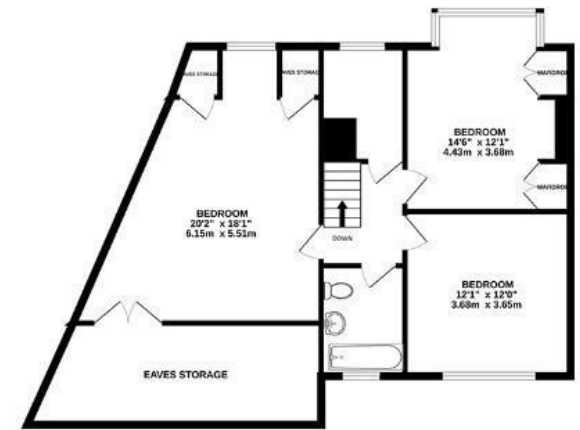
APPROXIMATE FLOOR AREA
160.9 SQM / 1732 SQFT



GROUND FLOOR



FIRST FLOOR



Illustrations are for reference purposes only, measurements are approximate, not to scale.

Boardwalk

Perrycroft

, BRISTOL

£

£500,000



BS13 7RZ

zzz

4 Bedrooms



2 Bathrooms

"We enjoy cooking together in the kitchen, eating at the dinner table looking onto the garden. In the winter having the fire on in the living room. Our dogs favourite spot is on the window seat we built looking over the cul de sac! We've had lots of parties throughout the years with our friends from BBQ's, roast dinners and after town late night drinks dancing around the kitchen / dinner. It's perfect for hosting and something we renovated the house with in mind."

